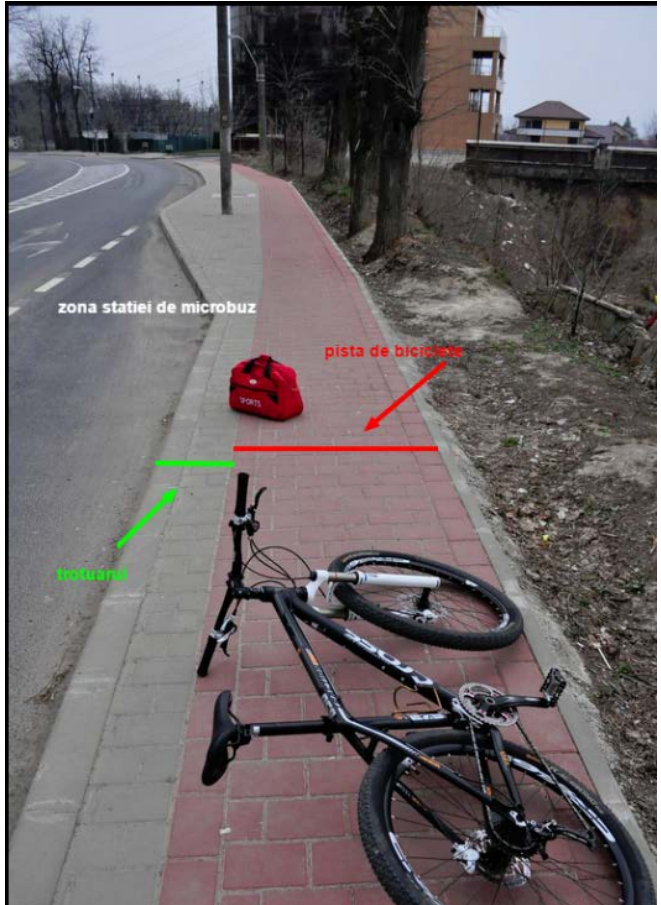
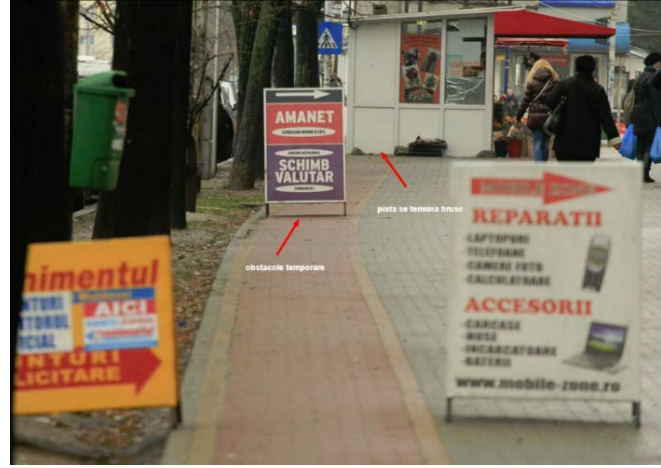




1 mașină = 10 biciclete



TU EȘTI TRAFICUL!



AUTOGENERAL S.A.

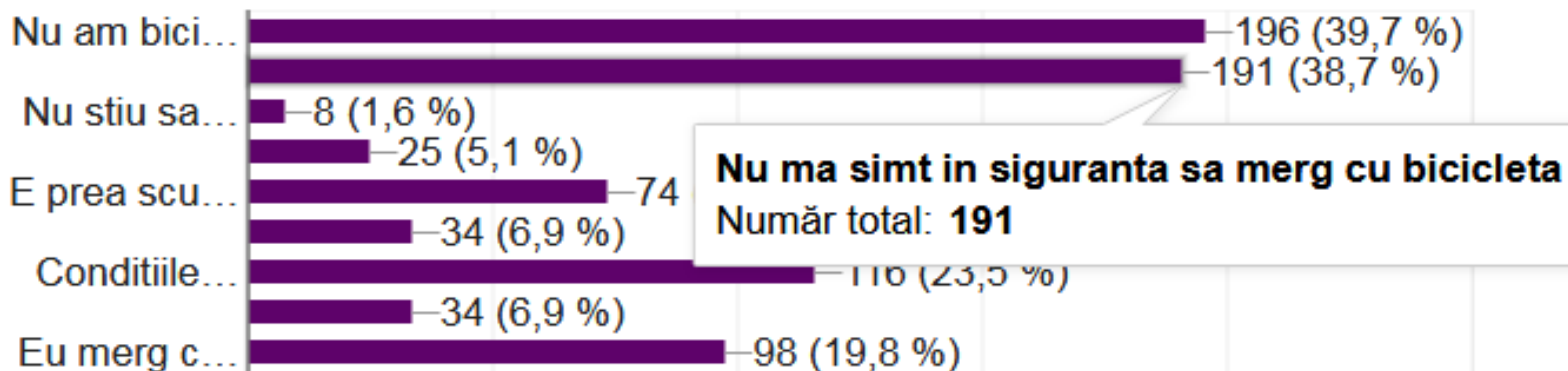
- ✓ Cele aproximativ **200.000 de masini** inmatriculate in Iasi ocupa **3 % !** din suprafata orasului.
- ✓ **23% dintre calatoriile cu masina sunt mai scurte de 3 km** - ar putea fi parcurse in mai putin de 15 minute cu bicicleta
- ✓ **consumam de 50 pana la 80 de ori mai multa energie mergand cu masina**, fata de cat am consuma pe bicicleta



Parerea iesenilor

24 aprilie - 10 mai 2017

494 de răspunsuri



Top 3 motive care descurajeaza mersul pe bicicleta

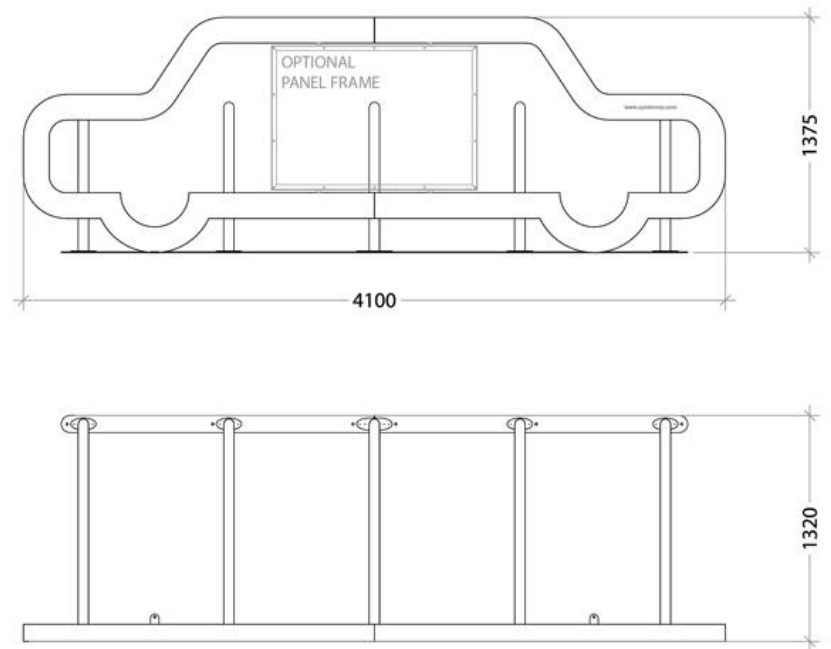
- ✓ Lipsa pistelor coerente
- ✓ **Lipsa parcarilor de biciclete**
- ✓ Volumul si viteza traficului

SOLUTIA

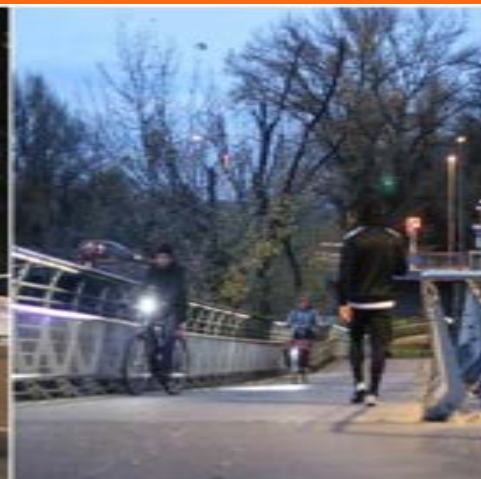
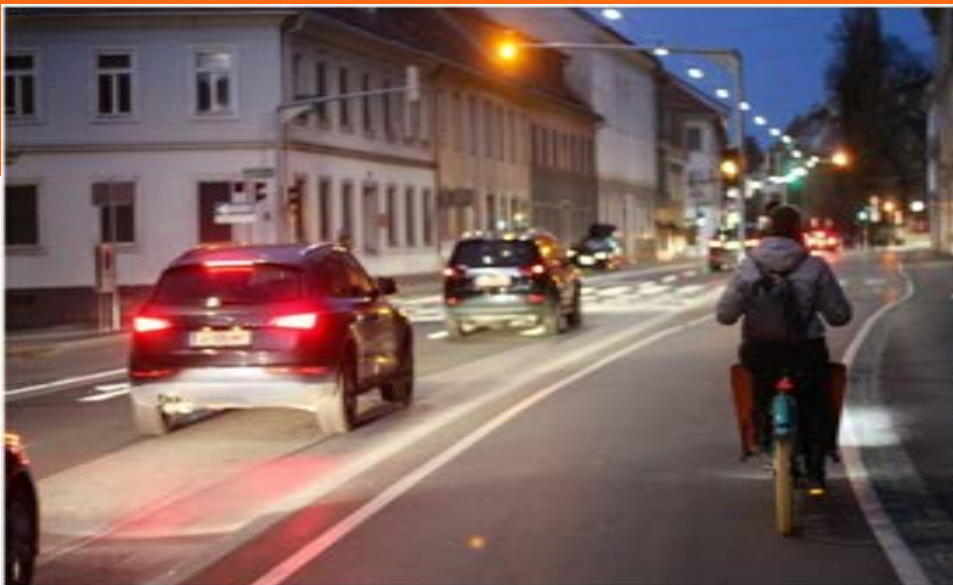
✓ functional

✓ simbolic

✓ social



Nu cerem autoritatilor locale sa interzica masinile, ci doar sa creeze conditii pentru ca locuitorilor sa le vina mai usor sa NU conduca.



Studies have shown that riding a bike every day
makes you more awesome than the general population.

